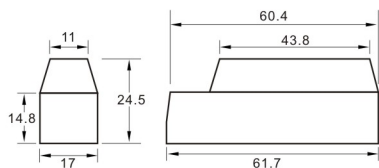


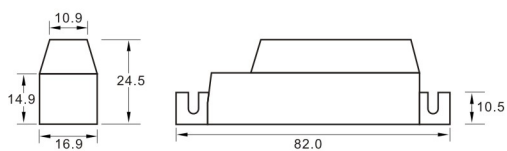
Unit:mm

Part No.: **LED-6AMP**

▶ Part No.: **W051**



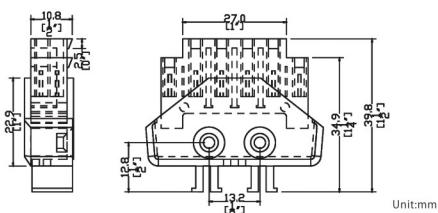
Unit:mm



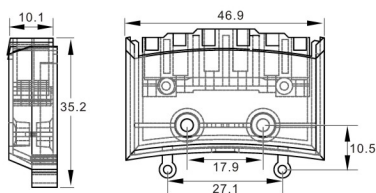
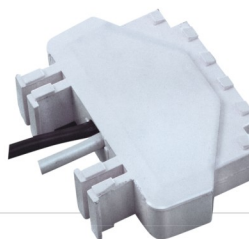
Unit:mm

Part No.: **W051A**

▶ Part No.: **W052**



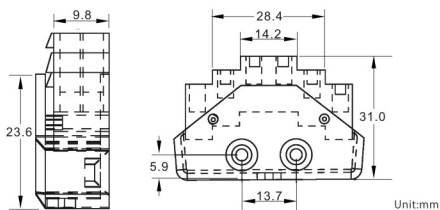
Unit:mm



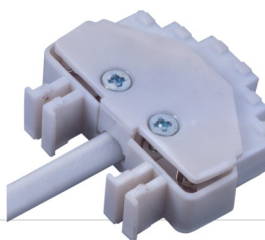
Unit:mm

Part No.: **W053**

▶ Part No.: **W054**

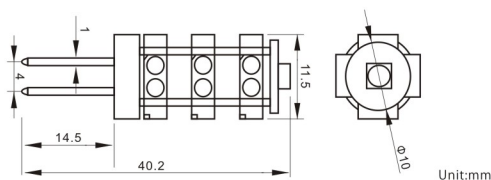


Unit:mm



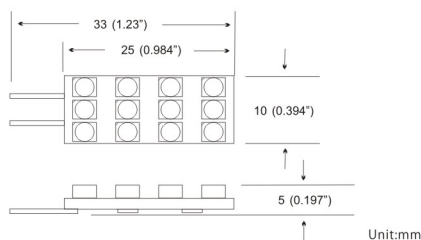
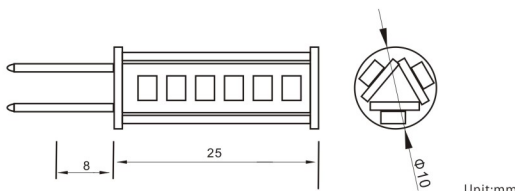
Features

- Voltage Rating : 12V
- Electric Circuit : Parallel Connection
- Approval : CE



Part No.: **G4-25LED**

Part No.: **G4-18LED**



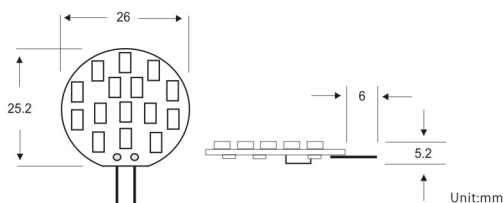
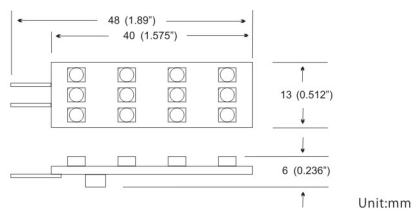
Part No.: **WD2-12LED**

Features

- Input Voltage : 12VDC(Constant Voltage Power Supply)
- Material : FR-4
- Power Source : 12VDC Constant Voltage LED Power Supply

- Intensity : Equivalent to a 10W Halogen Lamp
- LED Color : Warm White(3300± 200° K)
/ Cool White(6000± 200° K)

Part No.: **TWD2-12LED**

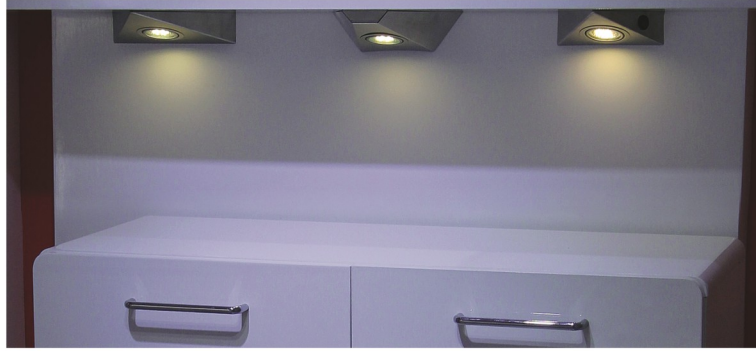


Part No.: **GW-15LEDs**

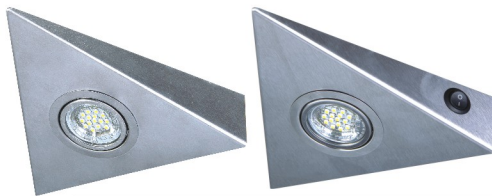
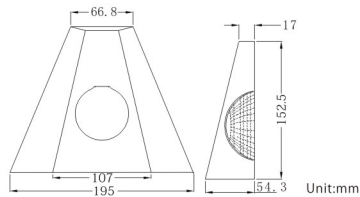
Features

- Input Voltage : 12VDC/VAC(Constant Voltage Power Supply)
- Material : FR-4
- Viewing Angle : 120°

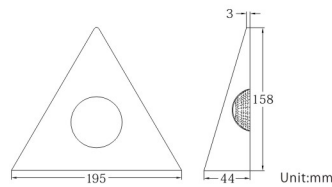
- LED Color : Warm White (3300± 200° K)
- CRI : >= 70
- Power Source : 12VDC(Constant Voltage LED Power Supply)



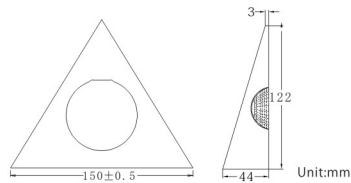
▶ Part No.: **HA189-LED**



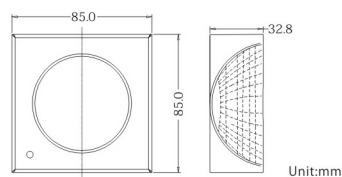
▶ Part No.: **HA489-LED**



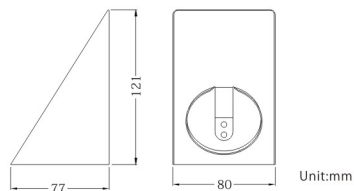
▶ Part No.: **HA589-LED**



▶ Part No.: **HA979-LED**

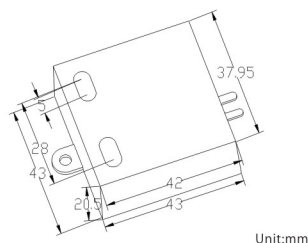


▶ Part No.: **HA689-LED**

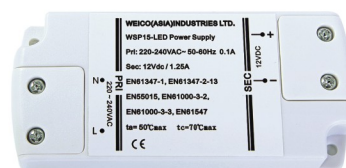
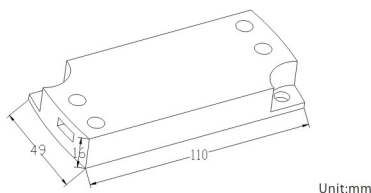


Features

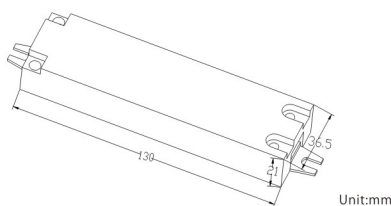
- Power Source : 12VDC(Constant Voltage LED Power Supply)
- Input Voltage : 12VDC/VAC(Constant Voltage Power Supply)
- Material : Iron or Stainless Steel
- LED Color : Warm White(3300± 200° K)
- With Switch on the Side
- Viewing Angle : 120°
- Bulb: 3528 15LED Bulb
- CRI : >= 70

**WSP1 Series -6W LED Driver****WSP1-06-350**
(Constant Current 350 mA)**WSP1-06-9**
(Constant Voltage 9V)**WSP1-06-12**
(Constant Voltage 12V)**WSP1-06-24**
(Constant Voltage 24V)**Specifications:**

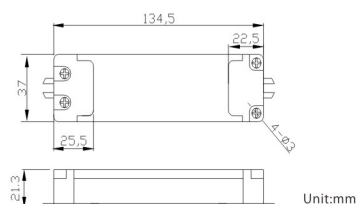
- Input: 100-240Vac
- Ta:50°C Tc: 70°C
- Open & Short Circuit Protection. Auto Recovery

Part No.: WSP15**Specifications:**

- 15W LED Driver
- Primary Voltage Range : 220~240VAC
- Input Current at 230V 50Hz : 0.15A
- Max. Case Temperature(Tc): +70°C Max.
- Dimension : 110(L)x50(W)x16(H)mm
- Color of Box : White
- Efficiency : >80%
- Output Power : 15W
- Secondary Voltage : 12VDC / 1.25A
- Ambient Temperature(Ta): +50°C Max.

**Part No.: WSP17****Specifications:**

- 15W LED Driver
- Primary Voltage Range : 200~240VAC
- Input Current at 230V 50Hz : 0.1A
- Max. Case Temperature(Tc): +70°C Max.
- Frequency : 50/60 Hz
- Color of Box : Black or White
- Efficiency : >70%
- Dimension: 135(L)x36(W)x21(H)mm
- Secondary Voltage : 12VDC / 0.5A
- Output Power : 6W
- Ambient Temperature(Ta): +50°C Max.

**Part No.: W-60(10-60W)
W-80(10-80W)****Specifications:**

- Input Voltage : 230V
- 12V Power Supply for Halogen Lamps
- Injection Molded ABS Casing.
- Pre-heat Function-Protects against Current Surge
- Short Circuit & Thermal Overload Protection
- Dimmable with Trailing Edge Dimmer

* Designed according to

EN55015 \ EN61000-3-2 \ EN61000-3-3 \ EN61347-1 \ EN61347-2-1 \ EN61547

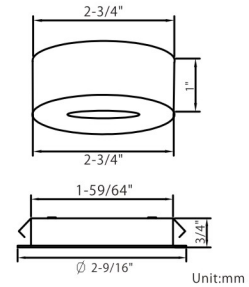
Weico (Asia) Industries Ltd.
No. 1-2 Tarsun Road, Tarsn Village
Sweilin Shang, Yunlin Hsien, Taiwan 65247

Tel: + 886-5-7853121 Fax: +886-5-7854812
E-mail: info@weico-asia.com
Website: www.weico-asia.com

ISO9001:2008 Certified Factory



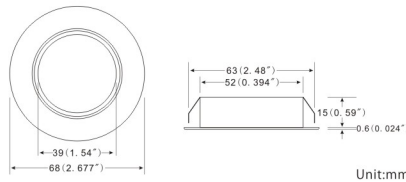
Part No.: **DL-6-1PLED (1W)**
DL-6-3PLED (3W)
DL-6-1PLED-12V
(Designed to Comply with
Constant Voltage LED Power
Supply 100 - 240VAC)



Features

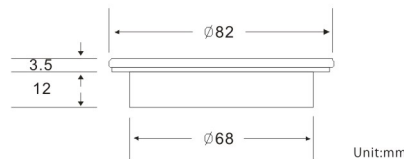
- Finish : Chrome , Brass , Black , White
- LED Color : Warm White (3300 ± 200° K)
- Optical Options: Optical Diffuser, Lens 30° or Lens 60°
- Life Time : 35000Hrs
- CRI : >= 70

Part No.: **DL-14-18-LED-12V**



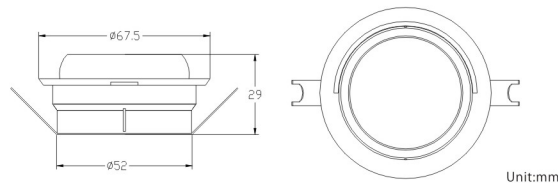
Features

- Input Voltage : 100 - 240VAC
- Optical Diffuser
- Power Source : 12VDC(Constant Voltage LED Power Supply)



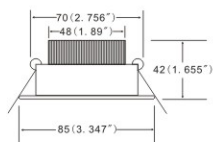
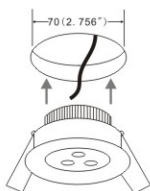
Part No.: **DL-80-36-LED**

Part No.: **DL-18-LED**



Features

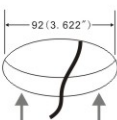
- Input Voltage : 12VDC(Constant Voltage Power Supply)
- LED Color : Cool White(6000 ± 200° K) / Warm White(3300 ± 200° K)
- SMD LED Lamp Energy Saving
- LED Viewing Angle : 120°



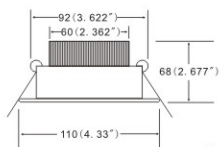
Part No.: **DL-085-3LED**

Unit:mm

Part No.: **DL-110-5LED**



Part No.: **DL-110-7LED**



Unit:mm



Features

- Input Voltage : AC 90-240V . 50/60 Hz
- LED Color : Cool White(6000±200° K)/Warm White(3300±200° K)
- Power Source : 350mA Constant Current LED Driver
- Can Rotate about 20 Degree
- Life Time : 35000Hrs
- Viewing Angle : LENS : 30° / 45°

Part No.: **DL-30-5W-LED**

(3528 80LED)
Dimintions: Ø 125 mm
Hole size: 110 mm

DL-32-11W-LED

(3528 121LED)
Dimintions: Ø 228 mm
Hole size: 218 mm

DL-31-7W-LED

(3528 77LED)
Dimintions: Ø 180 mm
Hole size: 170 mm

DL-31-9W-LED

(3528 99LED)
Dimintions: Ø 180 mm
Hole size: 170 mm



Features

- Input Voltage : 110-240VAC
- LED Color : Warm White(3500± 200° K)/Cool White(5500± 200° K)



S-004-LED



S-009-LED



S-019-LED



Z-9LED



S-023-LED

Features

- Input Voltage: 100-240VAC
- Bulb: 1W MR16 LED/ G4-25LED/ Φ 5 LED Bulb
- Power Source: 12VDC (Constant Voltage LED Power Supply)
- Finish: Chrome



Part No.: **PL-002-LED** 



Silver



Black

Features

- Input Voltage : 100 - 240VAC
- Finish : Sand Nickel(-SN) , Black(-BK) ,
Antique Copper(-AC) , Bronze(-BZ)
- SMD 3528 12LED Bulb * 2 (No:TWD2-12LED)
- LED Color : Warm White (3300 \pm 200° K)
- Viewing Angle : 120°
- CRI : \geq 70
- Power Source : 12VDC/500mA (Constant Voltage LED Power Supply)



S-020-M-LED



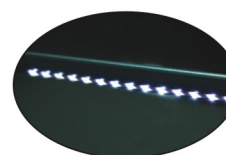
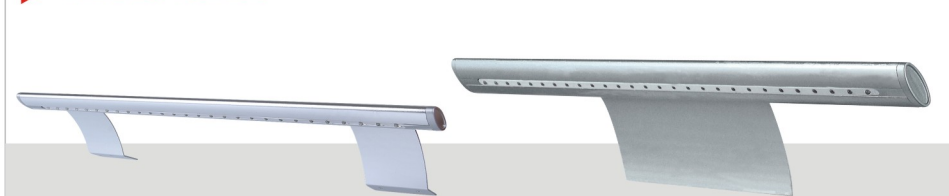
S-020-O-LED



Features

- Input Voltage : 12VDC (Constant Voltage Power Supply)
- Bulb: G4-18LED (360°) / WD2-12LED (180°)
- Lamp Shade Option: Close/ Open End Glass Tube with IP44 level or Metal Net Shade

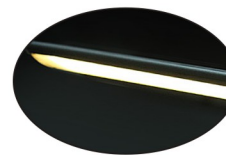
► RRL28 Series



Features

- Input Voltage : 100 - 240VAC
- Φ3 LED Lamp Energy Saving
- Viewing Angle : 30°
- LED Color : Cool White / Warm White
- Arm Width : 30/50/150mm or Double-arm Version
- Power Source : 13.8 VDC/0.5A (Constant Voltage LED Power Supply)

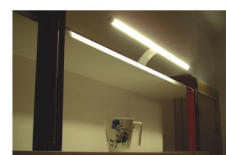
► Part No.: RRL21-W50



Features

- Input Voltage : 100 - 240VAC
- SMD 5050 21LED
- LED Color : Warm White (3300± 200° K)
- CRI : ≥ 70
- Power Source: 12VDC/0.5A (Constant Voltage LED Power Supply)
- Arm Width : 30mm or can be Specified

► Part No.: TR01-90LED

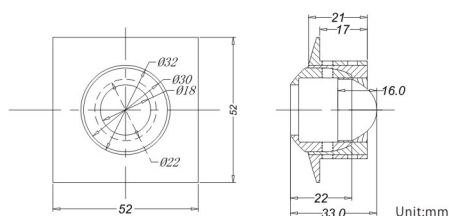
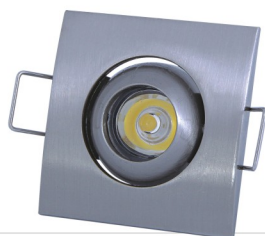
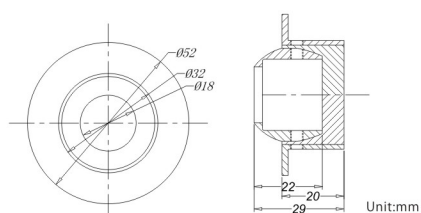


Features

- Input Voltage : 100 - 240VAC
- SMD 3528 90LED
- CRI : ≥ 70
- Life Time : 35000Hrs.
- Arm Width : 30mm or can be Specified
- Light Fixture Length or LED Quantity can be Specified
- Power Source : 300mA/DC18V (Constant Current LED Power Supply)

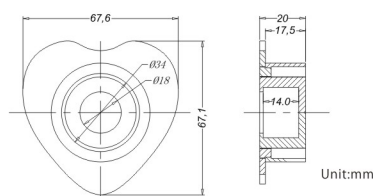
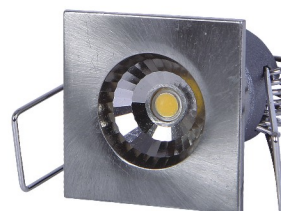
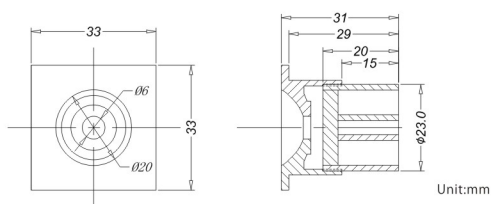


Part No.: **DL-S01**
Finish: Sand Nickel



Part No.: **DL-S02**
Finish: Sand Nickel

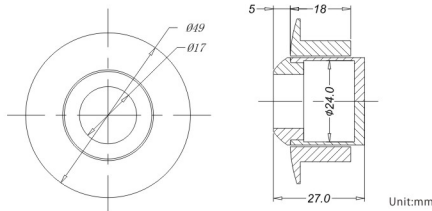
Part No.: **DL-S03**
Finish: Sand Nickel



Part No.: **DL-S04**
Finish:Stainless Steel Brush

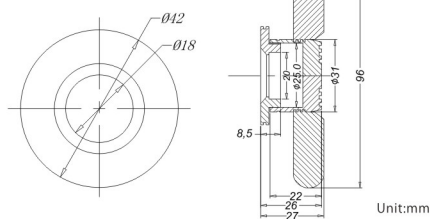
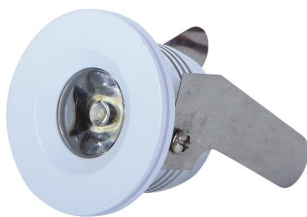
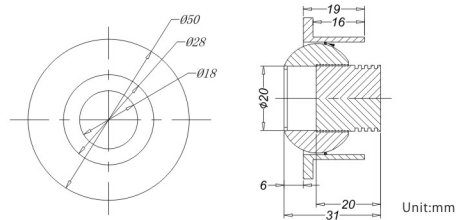
Features

- Input Voltage : 100-240Vac(WSP-14/ 350mA LED Driver)
Max. 1W LED * 4 (Weico 1-4W LED Driver)
- Material : Aluminum Lathe
- Viewing Angle : 30°
- The Product Structure: 1W Power LED Light Source
- LED Color : Warm White(3300± 200°K)/Cool White(6000± 200°K)
- CRI : >= 70
- Power Source : 350mA Constant Current LED Power Supply



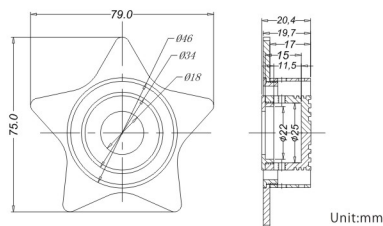
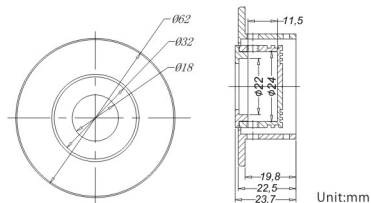
Part No.: **DL-S05**
Finish: Sand Aluminum

Part No.: **DL-S06**
Finish: Sand Silver



Part No.: **DL-S07**
Finish: White

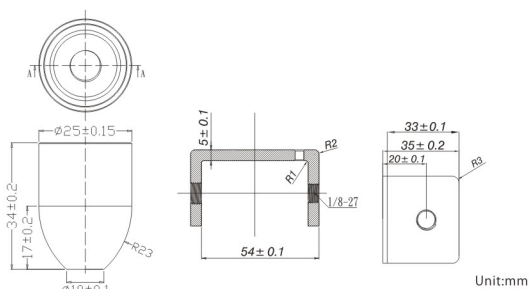
Part No.: **DL-S08**
Finish: Sand Silver



Part No.: **DL-S09**
Finish: Stainless Steel Brush

Features

- Input Voltage : 100-240Vac(WSP-14/ 350mA LED Driver)
Max. 1W LED * 4 (Weico 1-4W LED Driver)
- Material : Aluminum Lathe
- Viewing Angle : 30°
- The Product Structure: 1W Power LED Light Source
- LED Color : Warm White(3300± 200°K)/Cool White(6000± 200°K)
- CRI : >= 70
- Power Source : 350mA Constant Current LED Power Supply

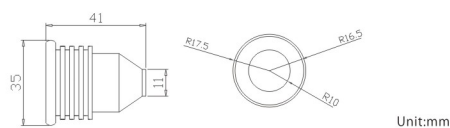


Part No.: **L-RG01**

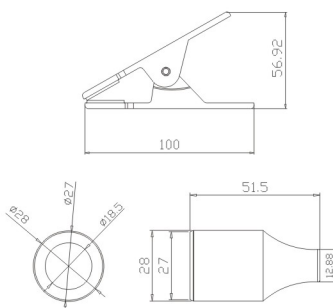
Unit:mm



Part No.: **L-RG02**



Unit:mm

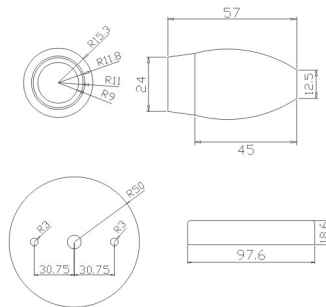


Unit:mm

Part No.: **L-RG03**

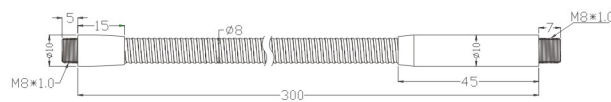
Features

- Input Voltage : 100 – 240 Vac, 50/60 Hz
- Material : Aluminum
- Viewing Angle : 60°
- LED Color : Warm White(3300± 200° K)
- Power Source : 13.8VDC Constant Voltage LED Power Supply

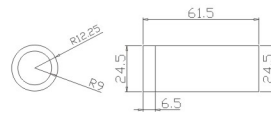


Part No. : **L-RG04**

Unit:mm



Part No. : **L-RG05**

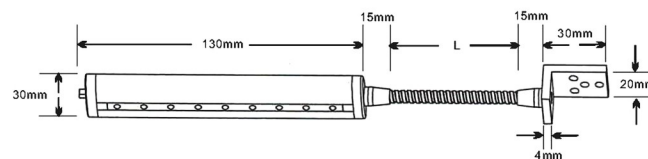


Unit:mm



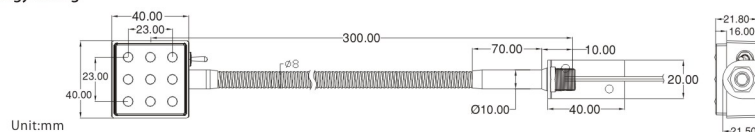
Features

- Input Voltage : 100 – 240 Vac, 50/60 Hz
- Material : Aluminum
- Viewing Angle : 60°
- LED Color : Warm White(3300 ± 200° K)
- Power Source : 13.8VDC Constant Voltage LED Power Supply



Part No. : **L-O20**
Φ3 LED Lamp Energy Saving

Part No. : **L-Q10**
Φ5 LED Lamp Energy Saving



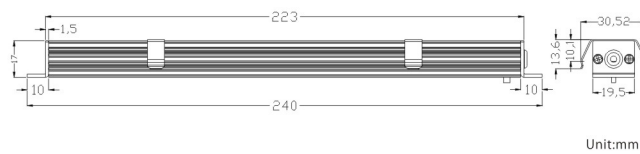
Unit:mm

Features

- Input Voltage : 100 - 240Vac
- Finish : Chrome
- Viewing Angle : 30°
- Easy Installation
- LED Color : Cool White/Warm White



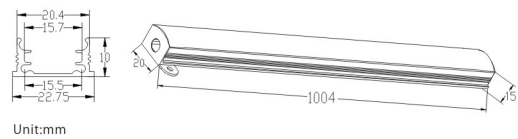
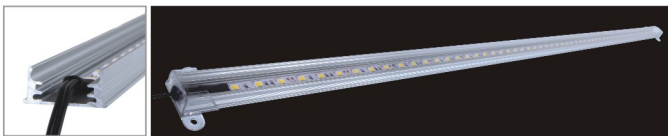
▶ Part No.: **S-5050-12LED-Series**



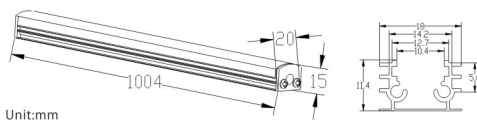
Features

- Input Voltage : AC 110-240V . 50/60 Hz
- LED Color : Warm White(3300± 200°K)
- Power Source : 12VDC Constant Voltage LED Driver
- Finish : Aluminium
- CRI : >= 70 Ra
- Option : Recessed & Linkable
- SMD 5050 12LED
- LED Life Time : >35000Hrs.

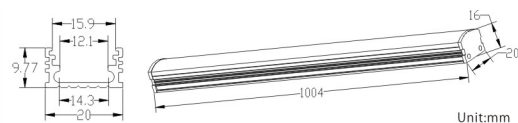
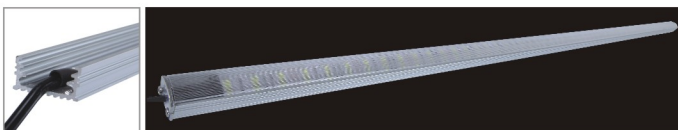
Part No.: **RL01-100** ◀



▶ Part No.: **RL02-100**

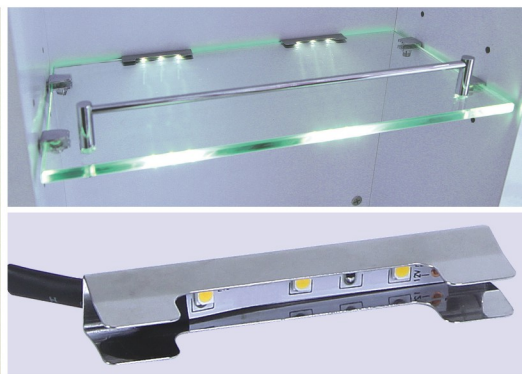


Part No.: **RL03-100** ◀



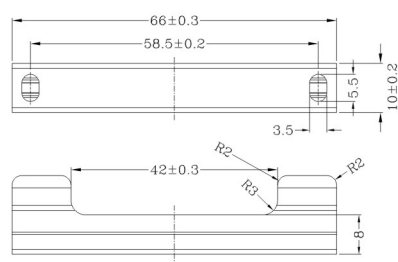
Features

- Input Voltage : 100 - 240VAC
- LED Color : Warm White (3300± 200°K)
- Power Source : DC12V (Constant Voltage LED Power Supply)
- Finish : Anodized Aluminum
- CRI : >= 70
- Life Time : 35000Hrs.
- Length & LED Quantity can be Specified



► Part No. : **L-CP01-24**
(clip 2-4mm glass)

L-CP01-68
(clip 6-8mm glass)



Unit:mm

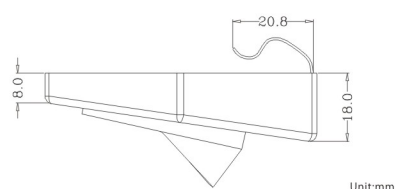


Features

- Input Voltage : 100 – 240 Vac, 50/60 Hz
- LED : 3 LED SMD (3528)
- Material : Metal
- LED Color : Warm White(3300± 200° K)
- Power Source : 12VDC Constant Voltage LED Power Supply (Supply up to 6 clips)



Part No. : **Wega-G4-LED** ◀



Unit:mm

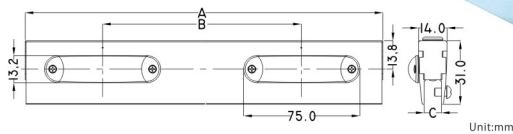
Features

- Input Voltage : 12VDC/VAC(Constant Voltage Power Supply)
- Finish : Aluminium
- LED Color : Warm White(3300± 200° K)
- Appropriate Glass Thickness : Max. 8mm
- Intensity : Equivalent to a 10W Halogen Lamp

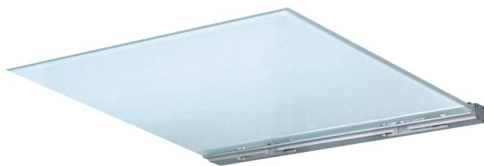


Part No.: **S-030-LED**

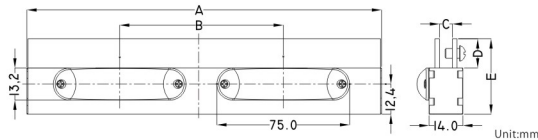
Type	A	B	C	D	E
A-270	150.0				
S-030 A-346	200.0	5.3/8.3/9.3		12.0	31.0
A-412	300.0		(6.3)	(10.0)	(30.0)



Unit:mm



Part No.: **S-031-LED**



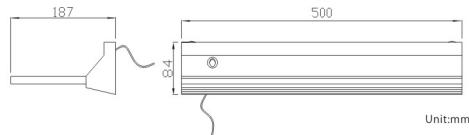
Type	A	B	C
A-270	150.0		
S-031 A-346	200.0		8.5
A-400	300.0		

Unit:mm

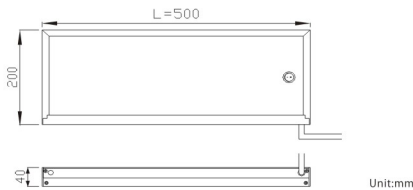
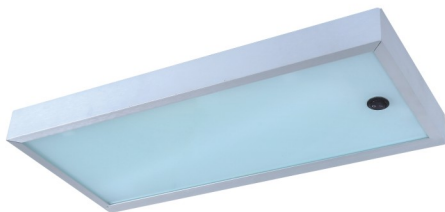
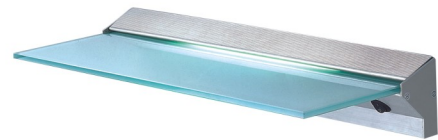
Features

- Input Voltage: 100-240VAC, 50/60Hz
- Alum. Housing
- Viewing Angle: 360°
- CRI: >= 70
- Bulb: 3528 G4-18LED Bulb*2 PCS
- LED Color: Cool White(6000± 200° K)/Warm White(3300± 200° K)
- Power Source: 12VDC(Constant Voltage LED Power Supply)

Part No.: **E9000-LED**
(SMD 5050 27LED)



Unit:mm



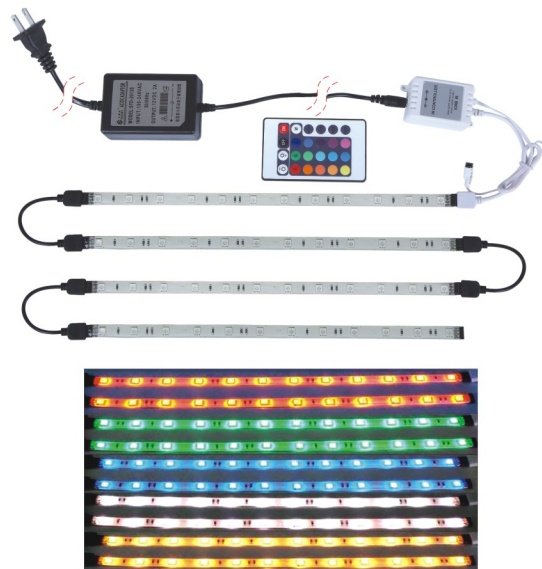
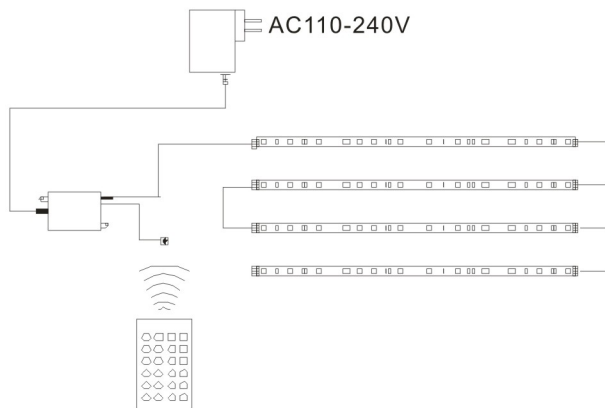
Unit:mm

Part No.: **E8000-LED**
(SMD 3528 72LED)

Features

- Input Voltage: 120VAC / 60Hz & 230VAC / 50Hz
- LED Color: Warm White(3300± 200° K)/Cool White(6000± 200° K)
- CRI: >= 70
- With 12VDC(Constant Voltage LED Power Supply)
- Open Circuit & Short Circuit Protection. Auto Recovery
- Life Time: 35000Hrs.

► Part No.: **RC-5050LED-RGB**

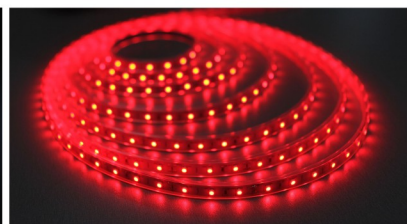


Features

- 12W Constant Voltage Power Supply
- Input Voltage : 100-240VAC / 50-60Hz
- Output Voltage : 12VDC / 1A
- 24Key Remote
- 5050 RGB Flexible LED Strip (12LED / 30CM)
- Wattage : Max. 2.5W / 200mA
- Life Times : 30000Hrs.
- Material : Metal
- 16 Kinds of Light Color Control/ Four Kinds of Flashing Mode Control
- Infrared Controller : Input Voltage 12VDC / Output : Max. 6A

► **SMD 3528 Series**
(L)5000mm x (W)8mm x(H)3mm

SMD 5050 Series
(L)5000mm x (W)10mm x(H)3mm



Features

- Light Source : SMD 3528/5050*300PCS (5M)
- View Angle 120°
- LED Life Time : >30000Hrs.
- Operating Temperature : Ta. -20°C ~ >45°C
- Input Voltage : 12VDC(Constant Voltage Power Supply)
- Option : Non-silicon/with Silicon/with Waterproof Casing
- LED Color : Cool White(6000± 200° K)
Warm White(3300± 200° K)

▶ Part No.:

TL-13032 (Black)

TL-13031 (White)



Part No.: **TL-13051 (White)** ◀

TL-13052 (Black)

Hole Size : $\Phi 150\text{mm}$

Dimension : $\Phi 164\text{mm} \times \text{H}169\text{mm}$

▶ Part No.: **TL-13071 (White)**
TL-13072 (Black)



Specifications:

• Light Source : LED-CREE-XML-30W
• Input : 110V-240V

• Kelvin : 3000K/4000K
• Output : DC24V 1500mA

• Viewing Angle : 25/40/60°
• Material : Aluminum



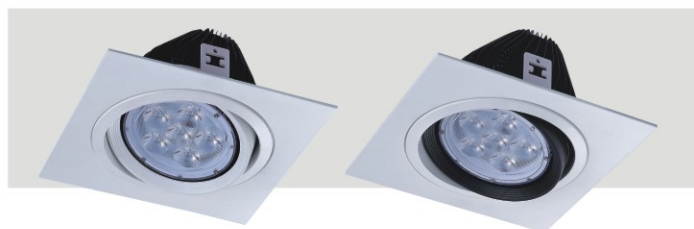
LED-AR111-CREE-XPE



Specifications:

- Light Source : LED-CREE-XPL-12W
- Input : 110V-240V Full Voltage
- Material : Aluminum
- Output : DC24V 500mA
- Kelvin : 3000K/4000K
- Viewing Angle : 25/40/60°

▶ Part No. : **TL-13101(White)**
TL-13111(Black)



Specifications:

- Hole Size : \varnothing 140mm
- Dimension : L:180mm*W:180mm* H:130mm
- Light Source : LED-CREE-XML-30W
- Input : 110V-240V
- Output : DC24V 1500mA
- Kelvin : 3000K/4000K
- Viewing Angle : 25/40/60°
- Material : Aluminum



Part No. : **TL-13102(White)** ◀
TL-13112(Black)

Specifications:

- Hole Size : 290*140mm
- Dimension : L:340mm*W:180mm* H:130mm
- Light Source : LED-CREE-XML-30W*1+LED-CREE-AR111*1
- Input : 110V-240V
- Material : Aluminum
- Kelvin : 3000K/4000K
- Viewing Angle : 25/40/60°
- Output : DC24V 1500mA / DC24V 500mA (AR111)

▶ Part No. : **TL-13103(White)**
TL-13113(Black)



Specifications:

- Hole Size : 450*140mm
- Dimension : L:500mm*W:180mm* H:130mm
- Light Source : LED-CREE-XML-30W*1+LED-CREE-AR111*2
- Input : 110V-240V
- Material : Aluminum
- Kelvin : 3000K/4000K
- Viewing Angle : 25/40/60°
- Output : DC24V 1500mA / DC24V 500mA (AR111)