



WEICO

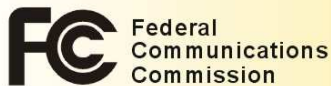
ENERGY-SAVING SOCKET





INNOVATION FOR HIGH ENERGY EFFICIENCY

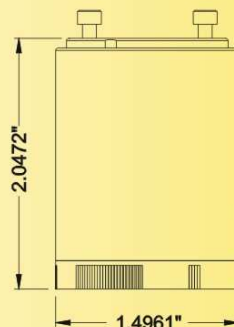
Exclusive Three Step Safety Design for easy installation to secure light bulb into socket RoHS Compliant,  C  /UL 1993 certified for wet location use,



Energy Star 4.0

Electronic Compact Fluorescent ballasted lampholder GU24

Model NO.	Specification	Drive type
WEB11-1	120V,60Hz,13W	IC
WEB12-1	120V,60Hz,18W	IC
WEB13-1	120V,60Hz,26W	IC
WEB1B-1	277V,60Hz,13W	IC
WEB1C-1	277V,60Hz,18W	IC
WEB1D-1	277V,60Hz,26W	IC



Characteristics:

- Ballasted lampholder, apply to PL energy efficient fixture
- Variety of installation and application
- Rapid Start
- Matching Lamp: PLS/PLT/PLA/PLC/PLG/PLR



INNOVATION FOR HIGH ENERGY EFFICIENCY

Exclusive Three Step Safety Design for easy installation to secure light bulb into socket RoHS Compliant,   /UL 1993 certified for wet location use,



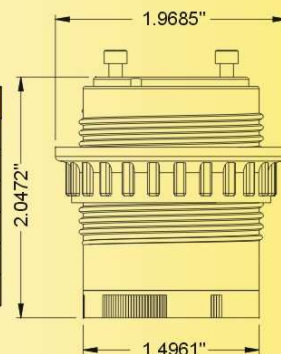
Federal
Communications
Commission



Energy Star 4.0

Electronic Compact Fluorescent ballasted lampholder GU24

Model NO.	Specification	Drive type
WEB11-2	120V,60Hz,13W	IC
WEB12-2	120V,60Hz,18W	IC
WEB13-2	120V,60Hz,26W	IC
WEB1B-2	277V,60Hz,13W	IC
WEB1C-2	277V,60Hz,18W	IC
WEB1D-2	277V,60Hz,26W	IC



Patent

Patent



Characteristics:

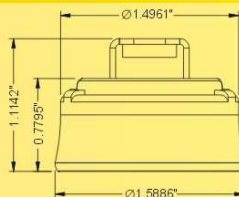
- Ballasted lampholder, apply to PL energy efficient fixture
- Variety of installation and application
- Rapid Start
- Matching Lamp: PLS/PLT/PLA/PLC/PLG/PLR



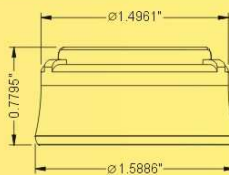
COMPACT FLUORESCENT SOCKET GU24



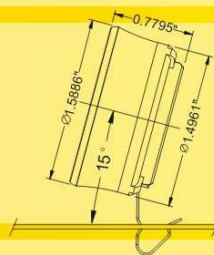
Application: Pendant Light, Wall Light, Recess downlight, Ceiling Light...etc...
Wire type: 18AWG or 16AWG AWM WIRE
Rating: 660W 600V



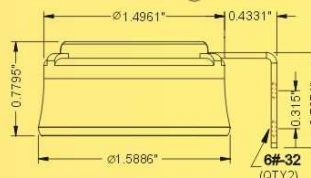
GU24 base lampholder		
Model no.	Type	Material
WESS11-01	Quick connect	Plastic
WESS12-01	With wire	Plastic



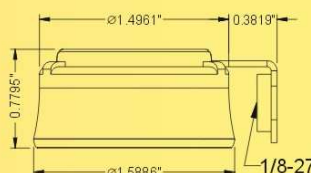
GU24 base lampholder		
Model no.	Type	Material
WESS11-02	Quick connect	Plastic
WESS12-02	With wire	Plastic



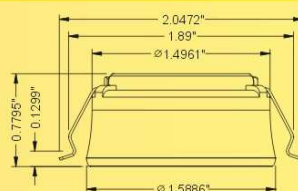
GU24 base lampholder		
Model no.	Type	Material
WESS11-03	Quick connect	Plastic
WESS12-03	With wire	Plastic



GU24 base lampholder		
Model no.	Type	Material
WESS11-04	Quick connect	Plastic
WESS12-04	With wire	Plastic



GU24 base lampholder		
Model no.	Type	Material
WESS11-05	Quick connect	Plastic
WESS12-05	With wire	Plastic



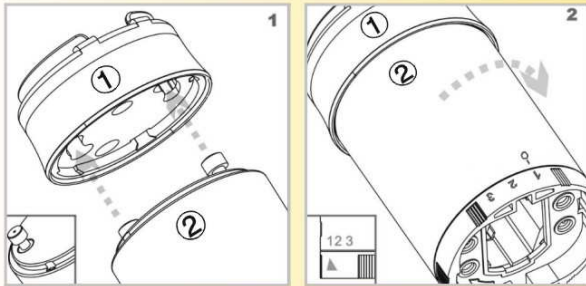
GU24 base lampholder		
Model no.	Type	Material
WESS11-06	Quick connect	Plastic
WESS12-06	With wire	Plastic



EXCLUSIVE THREE STEP SAFETY DESIGN

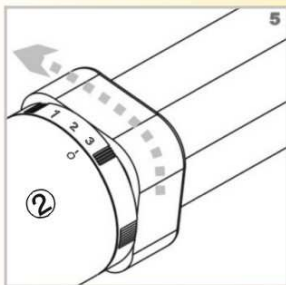
Installation Instruction DOUBLE LOCK:

① GU24 Lampholder ② Ballast housing



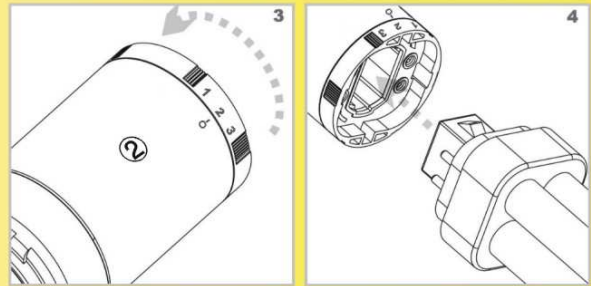
STEP 1

Turn the locking device on the ballast housing ② to "1" position & insert the pins on the ballast housing ② into the GU24 lampholder ① of the cap & turn clockwise to lock (See Figure 1&2)



STEP 3

Turn the locking device on the ballast housing ② to position "3" to firmly secure the bulb (See Figure 1&2)



STEP 2

Set the locking device on the ballast housing to position "2" to install the bulb (See Figure 3&4)

Relamping:

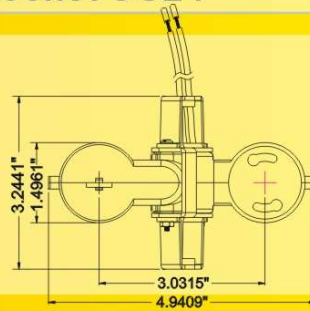
Turn the locking device on the ballast housing to position "2" to replace the light bulb (See Figure 4)





INNOVATION FOR HIGH ENERGY EFFICIENCY

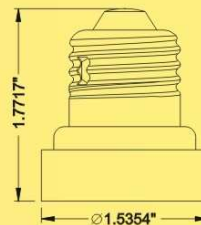
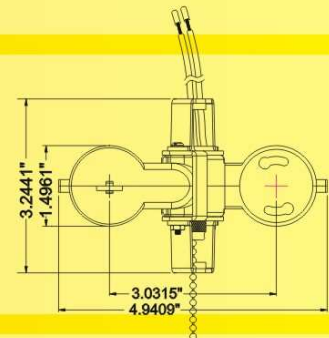
cUL_{US} Compact Fluorescent Socket GU24



GU24 Base Lampholder
Model no . WESS12-1A
Rating: 660W 600V



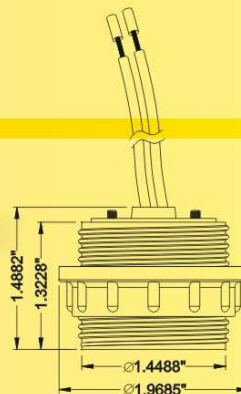
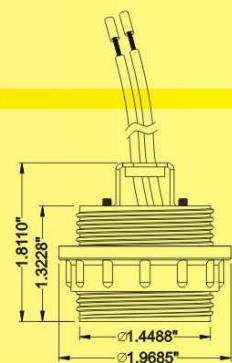
GU24 Base Lampholder
Model no . WESS12-1B
Rating: 660W 600V



GU26-GU24 Adapter Socket
Model no . WAS12-02
Rating: 660W 600V



GU24 Base Lampholder
Model no . WESS12-1C
Rating: 660W 600V



GU24 Base Lampholder
Model no . WESS12-1D
Rating: 660W 600V